

System Benefits

All systems include air and nitrogen buffer tanks

Minimal Installation Costs

Single-Skidded Design

Optional Integrated Membrane Dryer system

Switching valves that are rated for millions of cycles for trouble free operation

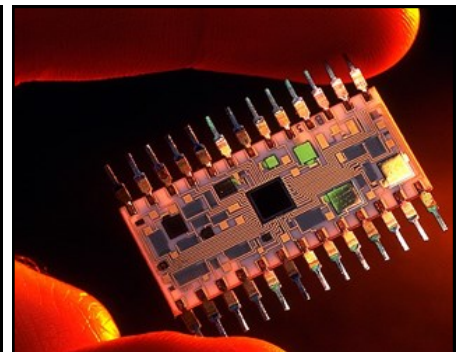
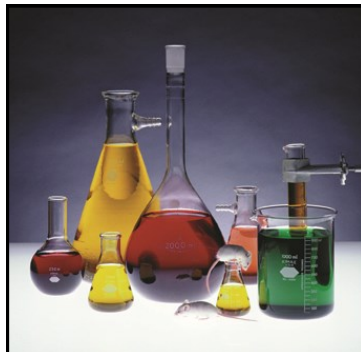
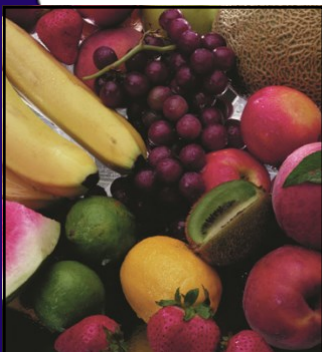
System Features

Input pressures up to 145 psig (10 barg)

Output pressures up to 120 psig (8.3 barg)

Flows up to 3300 SCFH (86.8 Nm³/hr)

Purities from 95% up to 99.999%



Continuing to be the leader in innovative system designs, GENERON

has developed the **Compact PSA System**. This new design was developed to bridge the gap between the Generon® Expandable and Twin Tower PSAs. Utilizing its extensive technology in nitrogen generators, this concept allows for small multiple bed PSAs to be installed on a common skid. The design allows for clients whose requirement is for **lower flows with high purities** to have a system which utilizes less space and installation time from conventional Twin Tower PSAs.

Using the highest efficiency CMS on the market to date, the overall system size has been reduced and will utilize less air than conventional PSAs on the market. As the units are integrated on a common base, with the air receiver and nitrogen receiver, installation time is reduced resulting in faster up time once delivered.

Model	Inlet Pressures		Nitrogen Purity / Flow Rate							
	PSIG	Barg	99%		99.9%		99.99%		99.999%	
			SCFH	Nm ³ /h	SCFH	Nm ³ /h	SCFH	Nm ³ /h	SCFH	Nm ³ /h
NS-2	110 to 145	7.58 to 10	129—166	3.4—4.5	71—86	1.9—2.4	43—47	1.1—1.3	20—17	.5—.4
NS-4	110 to 145	7.58 to 10	258—331	6.8—9.1	141—173	3.7—4.7	86—94	2.3—2.6	39—34	1.0—.9
NS-5	110 to 145	7.58 to 10	303—405	8.2—10.9	166—211	4.5—5.7	104—115	2.7—3.1	46—41	1.2—1.1
NS-6	110 to 145	7.58 to 10	387—497	10.2—13.6	212—259	5.8—7.1	129—141	3.4—3.8	59—51	1.6—1.4
NS-9	110 to 145	7.58 to 10	527—704	14.3—19.0	288—367	7.8—9.9	176—200	4.8—5.4	80—72	2.2—2.0
NS-10	110 to 145	7.58 to 10	606—810	16.3—21.8	331—422	8.9—11.4	203—229	5.5—6.2	92—83	2.5—2.2
NS-15	110 to 145	7.58 to 10	909—1215	24.5—32.7	497—633	13.4—17.1	304—344	8.2—9.3	138—124	3.7—3.3
NS-17	110 to 145	7.58 to 10	1054—1409	28.5—38.1	577—734	15.6—19.9	352—399	9.5—10.8	160—144	4.3—3.9
NS-25	110 to 145	7.58 to 10	1582—2115	42.7—57.1	865—1102	23.4—29.8	529—599	14.3—16.2	240—216	6.5—5.8
NS-34	110 to 145	7.58 to 10	834—1116	21.9—29.3	456—582	12.0—15.3	279—316	7.3—8.3	127—114	3.3-3.0
NS-40	110 to 145	7.58 to 10	1670—2232	43.9—58.7	913—1163	24.0—30.6	558—632	14.7—16.6	254—228	6.7—6.0
NS-45	110 to 145	7.58 to 10	2503—3346	65.8—88.0	1369—1744	36.0—45.9	837—948	22.0—24.9	380—342	10.0—9.0

Optional Items Include:

- Oxygen Analyzer
- Product Flow Meter
- Product Pressure Transmitter
- Fail Safe Mode
- Air Receiver
- Nitrogen Receiver