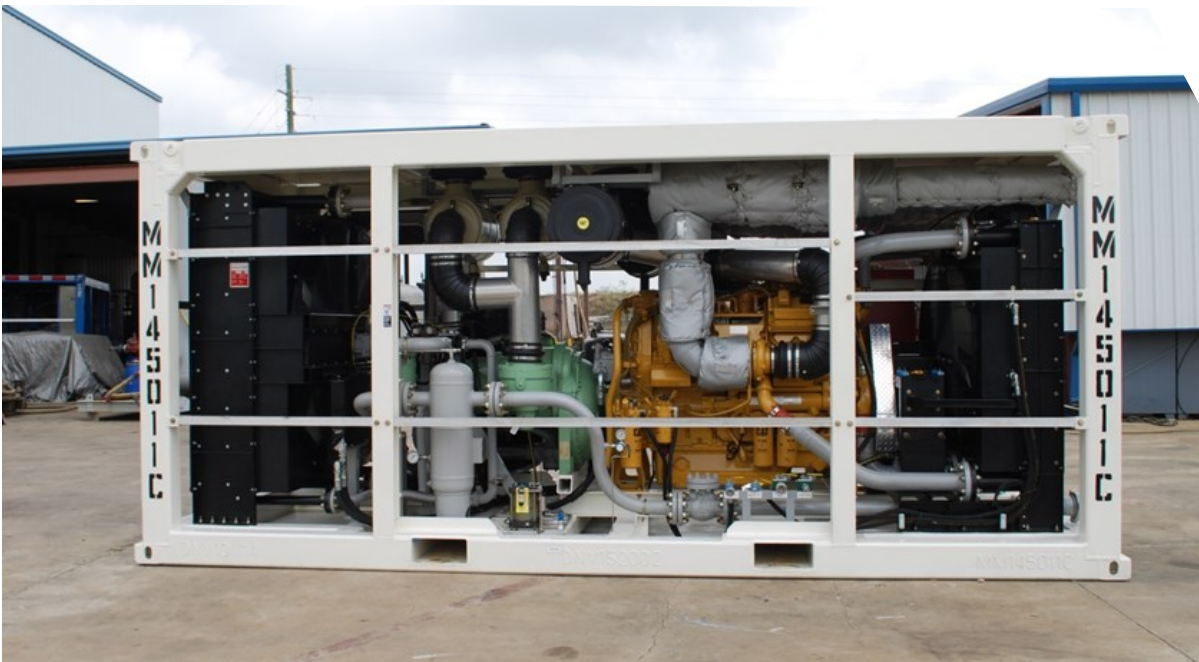


GENERON MOBILE AIR COMPRESSOR SYSTEMS

Air Compressor

Feed-Air Screw compressors gather air through an air filter at normal atmospheric pressure at an ambient temperature (up to 131°F(55°C)). The air is compressed from atmospheric 14.5 psig pressure to 350-psig (24-bar) using Sullair 2-stage compressors. A vertical cooler then cools the air to 120°F (49°C) before it is delivered through a common manifold to **GENERON®** nitrogen membranes. Each screw compressor is driven by a Caterpillar C-27 engine. Feed-air screw compressors are identical with the compressor and engine mounted inside their own Frame. Each skid contains a process cooler , a radiator for cooling the glycol , and lubrication oil used in the package. Coolers are belt driven which allows fan speeds to match operating conditions. Both the radiator and cooler are specifically mounted for easy removal.



Operating Shipping for ocean freight is the most direct and cost-effective. method of delivery or transport, Contact **Global Nitrogen & Oil Field Services** for more information at **713.937.5236** or jfont@generon.com.

AIR COMPRESSOR

Quantity	1 Unit
Compressors	GENERON Designed Sullair
Ambient Operating Temperature	131°F(55°C)
Capacity Air Discharge	1500 SCFM - 1800 SCFM of air +/- 5%
Suction Pressure	Atmospheric pressure 14.7 psig (1 bar)
Power	Caterpillar Model C-27 Engine Diesel powered 930 -hp (670 kW) at 1800 RPM on Standard Compressor or C-32 ATEX Rated on Class 1 Zone 2 (Optional)
Hazard Classification	All electrical equipment is Class 1, Division 2 or Class 1 Zone 2
Standards / Design Codes	ASME B31.3, API RP 500
Shut-Down Panel	Murphy TTDJ-DC-T control panel
Cooler Make & Model	GENERON Designed
Weight	32,000 LBS/11943KG
Skid Dimensions	8ft 6 in. H x 8 ft W x 19 ft. 10 1/4 in. L (20-ft DNV 2.7.1 Crash Frame shipping container)

FEATURING:

- Balon check and discharge valves
- Piping and vessels designed and built to ASME process piping standard B31.3 (extreme cyclic duty 100% X-ray)
- Painted to Global Nitrogen Services paint specification 68.0010
- Revision M Frame built to DNV 2.7.1 and designed for 50,000 lb four point 45° lift
- Engine muffler and exhaust insulation on all packages inside structure.
- Four 24-volt fixtures and switch rated for Class 1, Division II and wired to 24-volt battery bank.
- Stainless steel equipment tags.
- PSV vent headers with a flanged skid connection
- Scrubber manual dumps to skid edge
- One 3in. Compressed air discharge lines with one blind flange and one crossover to 206 Waco hammer union with cap
- Stackable 2-high for operations in DNV 2.7.1 Crash Frames

GENERON

16250 Tomball Parkway
Houston, Texas 77086
O +1 713 937 5200
F +1 713 932 5250
www.generon.com

GENERON



D-MAC-0617